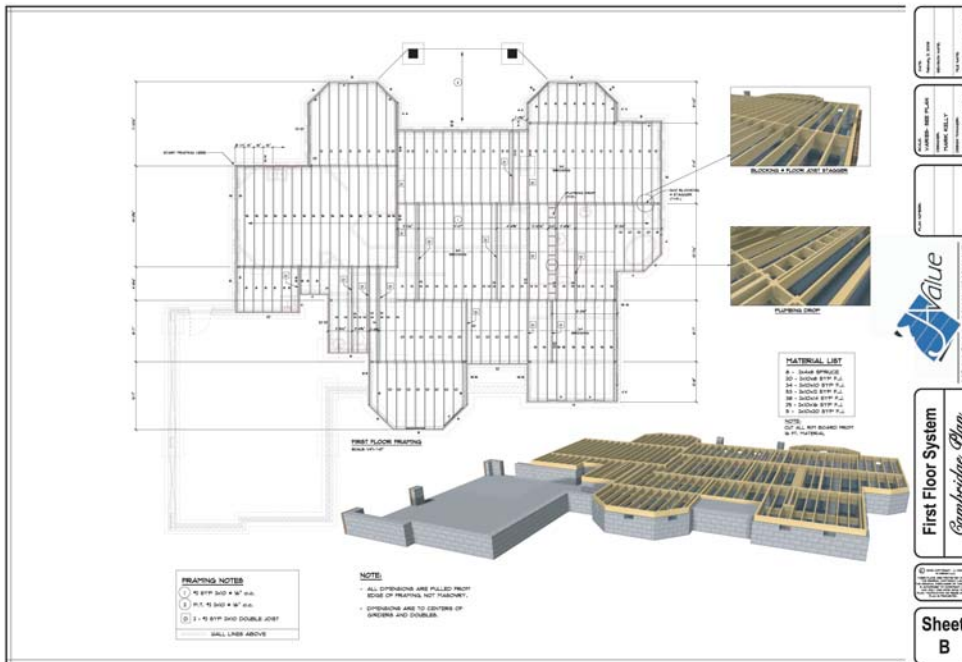




Specialty Packages



Go green

AVID can help your efforts to build "green" by providing you with construction documents utilizing many of today's energy efficient materials and construction methods. AVID has developed house plans that meet or exceed the requirements for NAHB's Green Building Certification Program, Earthcraft House and the LEED Green Building Rating Systems.

A-Value™ - Whole house model analysis

This specialty plan set starts with a three dimensional computer generated model of the home design. This model is used to analyze the entire building structure for maximum framing efficiency. Once complete, a highly detailed set of construction documents assists the builder by reducing labor and material costs. A-Value plans include:

- Detailed material lists
- Wall plate layout with stud placement
- Floor & ceiling joist placement plans
- Foundation squaring diagrams
- Wall framing elevation drawings with rough openings
- Detailed roof and floor sheathing diagrams

Other packages

Other AVID Specialty Packages include:

A-Access™

Home designs for home owners who want to "age in place" or have special access needs.

A-Energy™

Build your new home with any number of efficient construction materials.



AVID Market Managers are your local connection to AVID. These skilled representatives live in your area and understand your market tailoring AVID products and services to your specific needs.



Personal Service • Local Market Managers • Quick Turnaround
Guaranteed Buildable Plans • Builder Focused

101 E. Matthews St. Suite 200, Matthews, NC 28105
888.280.AVID (2843)
www.AvidHomeStudios.com